

CERTIFICATE OF LOCATION OF GOVERNMENT CORNER

NORTHEAST Corner of Section 22, Township 107, Range 40, 5TH P.M.

STATE OF MINNESOTA, County of MURRAY

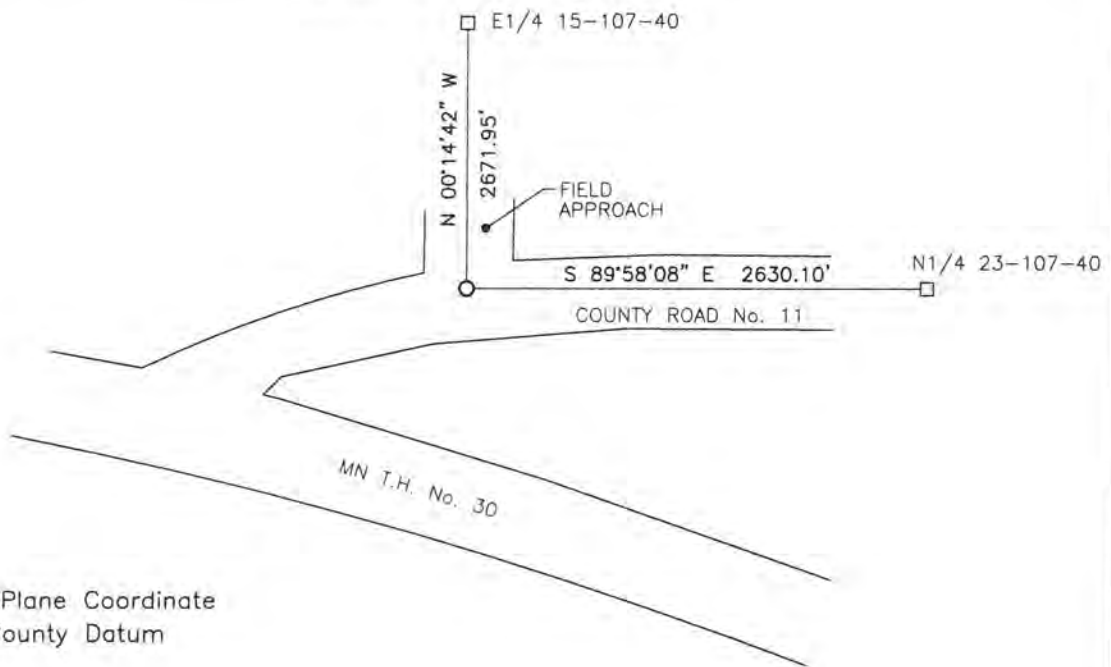
At the corner location shown on the sketch:

On 7/18/17 found a 1" iron pipe

left monument as found, lowered monument, removed monument (explain)

On _____ placed a _____

SKETCH OF REFERENCE TIES



Minnesota State Plane Coordinate
System Murray County Datum
NAD83 (1996)

N: 179360.434
E: 537778.562

Statement of evidence relative to this corner location is on back of page.

I hereby certify that this document and the data contained herein was prepared by me or under my direct supervision

[Signature] 9/18/17
SIGNATURE DATE

Registration No. 43844

- Land Surveyor, Professional Engineer
 County Surveyor, County Engineer

STATE OF MINNESOTA, }
COUNTY OF MURRAY, } ss.

I hereby certify that the within Instrument was filed in this office for record on the 12TH day of OCTOBER, A.D. 20 17 at 11:00 o'clock A. M. and was duly recorded as Document No. _____

[Signature]
County Recorder

Statement of Evidence

In 1861, L. Brockmann did the original subdivision of the township.

On June 4, 2012, Murray County Highway Department found a 1" steel pipe at the corner.

On July 18, 2017, Bueltel-Moseng Land Surveying found 1" iron pipe at the corner.